



RIVERSIDE RECREATION THERAPY INFORMER



May 31st-June 6th, 2026

RDC=Recreation Dining Center
FLC=Faith and Life Center

Monday, June 1st

10:00am- Bible Study with Pastor Linda -FLC

1:00pm- Planting the Courtyard Garden! -Courtyard *Weather Permitting*

3:00pm- 1:1 Visits! -Room to Room

Tuesday, June 2nd

10:00am- Chair Yoga with Jane! -RDC

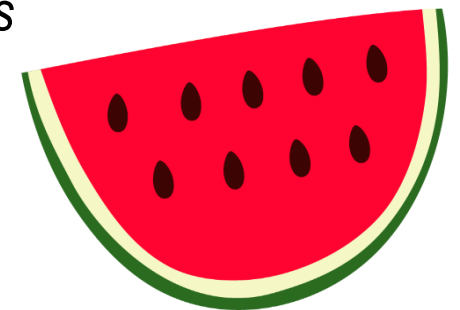
1:30pm- Bingo! -RDC

2:30pm- Manicures -RDC and Room to Room

Wednesday, June 3rd

1:00pm- Monthly Birthday Party! -RDC *Join us in celebrating Riverside's
May & June birthdays!*

2:30pm- Pet Therapy Visits with Sue and Curly! -Room to Room



Thursday, June 4th

9:30am- Pet Therapy Visits with Nancy and Walley! –Room to Room

9:45am- Rosary -FLC

10:00am- Mass -FLC

1:00pm- Game: Bean Bag Toss! -RDC

Friday, June 5th

10:00am- Hymn Sing with Emma Blank! -FLC

1:00pm- Jumbo Crossword Puzzle: Summer Edition! -RDC

Saturday, June 6th

No Bingo Today

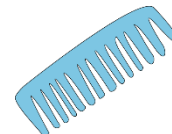


Please recycle this packet ☺



Beauty Shop:

Open on Thursdays



Call Jackie at 608-406-3955 to make an appointment! ☺

Euchre will take place in the RDC @2:30pm every Tuesday afternoon (pending enough players): if you'd like to join/learn, we'd love to add members to our group!

Did you Know We Offer?

- Books on Tape
- Crossword Puzzle Books
- Word Search Books
- Greeting/Holiday Cards
- 2 Book Shelves stocked by the La Crosse Public Library- no need to “check-out” these books, just take and read!
- Movies on VHS or DVD-if you are looking for something special, ask Rec. Therapy and we’ll let you know if we have it
- TONS of Craft Supplies (yarn, scrapbook paper, markers, glue, scissors, etc.)
- Need a Manicure? Let us know!
- Pianos in the Rec. Dining Center & Mitchell Lounge-Sit down & Play! We have song books
- Pianos on each Light House Unit
- Recreation Therapy Programs offered 6 days a week!

All of these services are offered *free* of charge!

All programs are subject to change

LUNCH/SUPPER MENU SUBSTITUTION LIST

Any requests given to the kitchen after 9:30 am for lunch or after 3:00 pm for supper may potentially be served last. The earlier the kitchen knows, the more accommodating they can be – ext. 63932

Fried Egg Sandwich
Grilled Cheese Sandwich
Boneless Chicken Breast
Hamburger on a Bun
Hot Dog on a Bun
Cold Cheese Sandwich
Peanut Butter & Jelly Sandwich
Poached, Fried, Hard Boiled or Scrambled Egg
Varied Meat or Meat Salad Sandwich
Soups – Tomato, Chicken Noodle, Broth
Chef's Salad
Chicken Caesar Salad
Baked Potato with toppings

MENU- Week 2

Saturday, May 30th

Lunch: Glorified Pork Chop, Boiled Potatoes, Spinach, Lettuce Salad, Carrot Cake

Supper: Turkey Ala King over Baking Powder Biscuit, Peas, Banana, Chocolate Almond Dessert

Sunday, May 31st

Lunch: Orange Chicken, Fried Rice, Seasoned Green Beans, Pineapple, Ice Cream

Supper: Broccoli Cheese Soup, Ham Sandwich, Strawberries, Cookie

Monday, June 1st

Lunch: Beef Stew over Dumpling, Cottage Cheese, Peach Pie, Fresh Buttered Bun

Supper: Chili Dog on a Bun, Potato Salad, Fruit Cocktail, Banana Bar

Tuesday, June 2nd

Lunch: Pork Roast, Mashed Potatoes with Gravy, Squash, Deviled Egg, Apple Crisp

Supper: French Toast Sticks, Bacon, Cantaloupe, Fudge Oat Bar

Wednesday, June 3rd

Lunch: Turkey, Cheesy Hash Browns, Western Baked Beans, Fruited Jell-O, Pumpkin Dessert

Supper: Pesto Chicken Pasta with Spinach, Hawaiian Fruit Salad, Scotcharoo, Variety Bread with Butter

Thursday, June 4th

Lunch: Salisbury Steak, Boiled Potatoes with Gravy, Stewed Tomatoes, Marinated Carrot Salad, Strawberry Pie

Supper: BBQ Pork on a Bun, French Fries, Pears, Lemonade Dessert

Friday, June 5th

Lunch: Shrimp Scampi, Sour Cream and Chives Mashed Potatoes, Mixed Vegetables, Banana, Sherbet

Supper: Vegetable Beef Barley Soup, Egg Salad Sandwich, Watermelon, Pistachio Pudding

Lunch

- Dorset Dining 10:40am - 11:00am
- Mitchell Room Trays 11:05am - 11:20am
- Mitchell Dining Room 11:30am - 11:50am

Supper

- Dorset Dining Room 4:00pm - 4:20pm
- Mitchell Room Trays 4:25pm - 4:50pm
- Mitchell Dining Room 5:00pm - 5:20pm