



EAGLE CREST COMMUNITIES

Caring Since 1946

SPRING EDITION 2023



IN THIS ISSUE

PAGE 2

A Special Message from
Todd Wilson, CEO

PAGE 3

Community Connections

PAGE 4-5

2023 Milestones

OUR MISSION

Rooted in Christian Faith
Caring for Each Other
Serving the Community

OUR CORE VALUES

Teamwork
Respect
Integrity
Commitment
Love

BOARD OF DIRECTORS

Joe Zoellner - *Chair*
Pete Hansen - *Vice Chair*
John Robinson - *Treasurer*
Sean O'Flaherty - *Secretary*
Mike Flanagan - *Director*
Sara Havens GHS - *Director*
Leah Mudler - *Director*
Angela Strangman - *Director*
Todd Garves - *CFO*
Todd Wilson - *CEO*

OUR COMMUNITIES

Eagle Crest South
608.791.2700

Eagle Crest North
608.779.1700

Riverside
608.406.3900

The Willows
608.406.3980

Cass Street
608.796.1091

The Heights
608.526.2635

Hearten House I
608.784.4511

Hearten House II
608.784.4522

Hearten House III
608.526.6796

Heights Town Homes
608.791.2709

Connections

This year we recognized employees that reached a service milestone ranging from 5-45 years of service. We have about 550 employees at Eagle Crest Communities and this year we honored 30 of our employees that reached a service milestone.

I was blessed to celebrate my 20-year anniversary at Bethany Lutheran Homes/Eagle Crest Communities. The last 20 years have passed very quickly. We have achieved a lot of company milestones as well and I am grateful for everything our wonderful employees have achieved over that period of time.

Our Employee Milestone Celebration is my favorite event of the year, because we spend time recognizing the people who are the foundation of Eagle Crest Communities.

We all know that working in long-term care is not easy work; it's stressful, demanding, emotionally and physically challenging and we are working with people whose lives depend on the work we do. We serve as an extension of the family when they have a need.

Long-term care is a complex business, we hire a diverse group of employees all working together to provide care and services for a wide range of senior care needs and we value each of our employees for the contributions they make to our success.

When you look at the extensive list of positions at Eagle Crest Communities, it's a real eye opener. We employ:

- Direct Care Workers CNA's, CMA's and RCA's • Licensed Nurses RN's and LPN's
- Administrative Nurses and Nurse Managers • Campus Managers & Administrators
- Marketing Professionals • Admissions Coordinators • Physical, Occupational and Speech Therapists • Social Workers & Program Coordinators • HR Professionals; Administrative Assistants • IT and Information Systems Administrators • Life Enrichment Professionals
- Chefs, Cooks and Dietary Servers • Maintenance Teams • Environmental Housekeeping and Laundry Specialist • Payroll Specialists, Accounting & Business Professionals • Pastors.

We value each and every one of our employees and we will continue to invest in all of our employees as they are our most valuable asset. As we honor our employees, we realize longevity is what shaped Eagle Crest Communities over the last 76 years. It's what has carried on our evolving mission and it's the foundation of Eagle Crest Communities great history.

I like to remind everyone, that many of our employees spend more time with the people they work with each day than they do with their own family.

Generally, you find that people who have longevity at a workplace, like what they do and they like who they work with. They have fun at work and they develop friendships and trusting relationships with their coworkers. One thing that continues to impress me is how much the people that work for Eagle Crest Communities care for one another and how they reach out when someone needs them. That is a very good indication of a healthy workplace.

I encourage our employees to have fun and enjoy their work and share their success with those they work with.

Thank you again for all of your dedicated service to Eagle Crest Communities, and congratulations to all of our milestone achievers.

I ask that you consider Bethany Lutheran Homes/Eagle Crest Communities in your planned giving. Gifts to Bethany Lutheran Homes/Eagle Crest Communities are a great investment in the community. Donations for our tuition incentive program and employee recognition help us attract and retain the staff needed to serve our community. Have a wonderful spring!

~ Todd D. Wilson, *Chief Executive Officer*



Community Connections

I have come to realize that faith is part of being a healthy human. Health is inherently communal. When I was a pastoral intern at a suburban congregation in the Twin Cities, MN, I was asked to preside at the funeral service for one of the longtime members, Sylvia. I felt like a seedling near a great but fallen oak. Sylvia had been at this faith community for decades, serving on many committees, a leader in the school district, attending every possible event. She was a fully grown woman of faith, and her death left a big gap. Of course, Sylvia did not simply die one day and disappear from our lives. She nurtured our ongoing lives with her memory just as surely as a fallen oak feeds the forest soil and holds the young giants still reaching upward.

It is hard not to look up in awe into the high reaches of a deep and healthy forest. But the true story is in the dirt, the roots. And what is forest loam but fallen trees? Everywhere you look in a natural forest you see trees on their way to loam and soil on its way to the sky.

Ever since that day along with author, Gary Gunderson's "Deeply Woven Roots", helped me have thoughts of a faith community and its surrounding community as a forest, an image that leads us into the future in two ways. First, we can see ourselves as one of the trees, taking comfort in the complex richness of our enduring connections. Second, we can see ourselves as foresters, with the humble patience of stewards who measure their contributions in terms of decades, nurturing and defending a living process.

Although forests may span miles, any one tree has to grow where it happened to sprout, hoping to bear the fruit it can. Storms and fires may sweep aside the weak. Some are more resilient than others; some keep growing even after they have been knocked down. But the big difference is whom they grow next to, whose roots tangle with their own.

A forest's resilience reflects diversity. Any one tree relies not just on its own roots but on an interwoven fabric of roots. And while it is a good thing to put down roots, grow into the wind, and rise high into the sky, it is also good to know that even in our falling, even as our individual memories slip behind, we will be part of the whole.

One of the most important things to understand about a redwood tree – and about a community – is how it passes life on. Where does the next generation come from? Redwood trees don't usually spring from individual seeds; they spring from the roots of older trees. Not only are they tangled together at the top, they are inseparable at the bottom, where their roots are deeply woven together.

Something like that is true in communities, for we, too, spring from the roots of those who proceed us. We are not held up by living soil like trees, but we are sustained by the coherence, the living meaning, that we experience in our communities. That is a spiritual function entrusted not just to a few great leaders but to all of us who resonate, who believe in God by whatever name we know God, by whatever way we know God.

Communities accompany, convene, and connect. They give sanctuary and context. They bless, pray, and persist. There are the strengths around which our structures will form and reform. These are the channels along which we can expect to find God breaking into our midst and nurturing our communities toward life.

For everything a season,

~ Pastor Linda McPeak





**EAGLE CREST
COMMUNITIES**
Caring Since 1946

2023 MILESTONES

We celebrated our staff for their years of service with our Milestone Event. This celebration is a "thank you" to the staff for their hard work and dedication and recognizes their milestone anniversaries. We are proud of the staff we have at Eagle Crest Communities, are thankful for their commitment to our residents and families, and we appreciate their dedication to our organization.

Thank you to all of our employees for everything you do - each and every day!



We truly appreciate all of our Milestone Recipients, and are thankful many were able to attend this year's event!

5
YEARS

SIKORA, JAKE
Riverside CNA

BOISVERT, SUSAN
Riverside RN, MDS Case Manager

MALSON, MEGAN
Riverside RN

SANDERSON, ROXI
Riverside Laundry Aide

MICKELSON, KRISTINE
Riverside Dietary Aide

FRUTH, JEANINE
Riverside Housekeeping Specialist

RUUD, KATIE
Riverside RN

THOMPSON, WENDY
Riverside HUC II

TEAL, SAMANTHA
Heights RCA

MERCER, MARNIE
Heights RCA

TRAUTSCH, MALLORIE
Eagle Crest South
Life Enrichment Coordinator

GESLEY, KATHLEEN
Eagle Crest South Receptionist

LEE, LUCY
Eagle Crest South Life Enrichment
Assistant

WERMEDAL, MAUREEN
Eagle Crest North

LAMPERT, DOUGLAS
Cass Maintenance Technician I



A special thank you goes out to our Recognition Committee for planning and hosting this important event every year!

10
YEARS

DOLAN, JUDITH
Riverside Director of Food Service

KVAMME, BRENDA
HH RCA Team Lead

HEROLD, REBECCA
ECS RCA

HOESLEY, TAYLOR
ECS Nursing Services Assistant

PETERSON, KAREN
ECN RCA

LARSON, STEPHANIE
Corp Staff Accountant

20
YEARS

XIONG, MAI
Hearten House III RCA

WILSON, TODD
Corporate CEO

25
YEARS

KVISTAD, ELIZABETH
Riverside Housekeeping Specialist

CRAIG, CINDY
Riverside RN, MDS Case Manager

15
YEARS

KAMINSKI, CHELSEA
Riverside Lead CNA

PRINDLE, BRIANA 15
Eagle Crest North RN

WILLIAMS, BENJAMIN
Eagle Crest North Senior Director
Environmental Services

40
YEARS

MIKSHOWSKY, LORI
Riverside Cook Supervisor

We Love Eagle Crest Communities!



*Josh Koenecke,
Eagle Crest Communities Hearten House II*

"You feel very validated by the fact that residents want to be independent but they rely on us (staff) for help. The residents are all incredible people who have done incredible things all throughout their lives. They want to live the life and do things they used to do. It is a great opportunity for us as their caregivers to be able to be there for them and share so many experiences, but also give them security and peace of mind for their everyday."

See why we love Eagle Crest Communities and see how rewarding it is to be a part of such a caring team. We have a vast variety of employment opportunities in all areas of skillset. Find the perfect career and feel good about what you do.

JOIN OUR TEAM TODAY!

**Contact us at 608.406.3886 or hr@eaglecrestlife.org
or visit us online at eaglecrestlife.org/careers**



Work-Life Balance



Education Scholarships



Advancement Opportunities

Employee Spotlight

I moved from Madison to La Crosse in 2018 and shortly after started working as a Resident Care Assistant in memory care for Eagle Crest South in 2019. Over the last three years, I've had the opportunity to extend my knowledge and experience into the Nurse Intern position. Eagle Crest Communities has not only provided me with numerous educational and professional advancement opportunities but also personal ones. I have met some of my best friends and formed some of my closest relationships throughout my years here.

As I finish my senior year and nursing degree at Viterbo University, I am grateful to have worked for a company as flexible and accommodating as Eagle Crest Communities. The Tuition Investment Program has also allowed me to reach my educational goals while alleviating some of the financial burdens. There is a reason Eagle Crest Communities is continually recognized for its amazing care, the people who work here, in all departments, are passionate about their work and our residents.

~ Alyssa Hilker, Eagle Crest Communities South



*Alyssa Hilker,
Eagle Crest Communities South*

Donations & Support



Capital Fund



Legacy Fund



Employee Recognition Fund



Tuition Incentive Program

Employee Appreciation Fund

Mary Lou Biddlestone
C. Richard & Kathleen Kistner
Barbara Quillin

In Honor of Marjorie Shannon

Kristie Olah
Terry De Robeis
Kerry Shannon

In Memory of Bernedette "Bernie" Tegeler

James & Marian Elson
Jacob & Mary Nickel
Jeff & Mary Priem
Kathleen Steffen

Tuition Incentive Fund

Connie Repnik Memorial Fund of La
Crosse Community Foundation
Mary Lou Biddlestone
C. Richard & Kathleen Kistner
Marilyn McElligott
Mike Porter
Kathryn Spelker

In Memory of Donald Meyer

Jackie Meyer

In Memory of Bernedette "Bernie" Tegeler

Jeff & Mary Priem

Legacy Fund

English Lutheran Church
First Baptist Church
Chuck Gustafson
Mary Groeschner

In Memory of William Colclough

Barbara Colclough

In Memory of Katherine "Kak" Reinhart

Margaret Newcome

In Memory of Bernedette "Bernie" Tegeler

Mary Priem

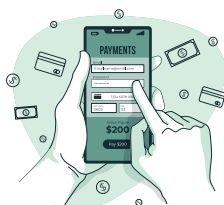
In Memory of Gary Veldey

Mary Veldey

Capital Fund

In Memory of Katherine "Kak" Reinhart

Maureen & Greg Barth



**PAYPAL IS NOW
AVAILABLE!**

**Please visit us at:
www.eaglecrestlife.org**

Employee Giving Club

Donna Brogan

Cindy Craig

Hannah Fort

Todd Garves

Cathleen Grinde

Elizabeth Kvistad

Haley Martin

Lori Mikshowskey

Carin Myhre

Shelly Olson

Patrick Senzig

James Stenulson

Vickie Stevens

Todd Wilson

Eagle Crest Communities Donation Form

Helping Eagle Crest Communities continue to provide quality, compassionate care in the Coulee Region. Donations are gratefully received and tax deductible to the extent allowed by law.

Name _____

Address _____

- ☐ This gift is in honor of _____
- ☐ This gift is in memory of _____
- ☐ Capital Fund - supports major projects such as Eagle Crest developments.
- ☐ Legacy Fund - supports activities and special events, and enhances amenities & technology for residents.
- ☐ Tuition Incentive Program Fund - supports our recruitment and retention program.
- ☐ Employee Appreciation Fund - promotes employee appreciation.

Special requests are always welcome!

Payable to:
Eagle Crest Communities

Mail to:
Eagle Crest Communities
PO Box 2468
La Crosse, WI 54602-2468





EAGLE CREST COMMUNITIES

Caring Since 1946

2575 South 7th Street
La Crosse, WI 54601

Bethany Lutheran Homes, Inc.



THANK YOU!

from Eagle Crest Communities

A heartfelt thank you to our residents, families, & friends for trusting us to care for your loved ones. Thank you for acknowledging the work our team does.

Because of you,

**we have been voted #1
in La Crosse County!**

- Best Assisted Living Facility
- Best Retirement Community