



EAGLE CREST COMMUNITIES

Caring Since 1946

WINTER EDITION 2022



IN THIS ISSUE

PAGE 2

A Special Message from
Todd Wilson, CEO

PAGE 3

Holiday Fun!

PAGE 4-5

A New Look For
Hearten House I, II, & III

OUR MISSION

Rooted in Christian Faith
Caring for Each Other
Serving the Community

OUR CORE VALUES

Teamwork
Respect
Integrity
Commitment
Love

BOARD OF DIRECTORS

Lu Cagin - *Chair*
Joe Zoellner - *Vice Chair*
Pete Hansen - *Treasurer*
Dyanne Brudos - *Secretary*
Kenna Christians - *Director*
Mike Flanagan - *Director*
Sara Havens GHS - *Director*
Leah Mudler - *Director*
John Robinson - *Director*
Todd Garves - *CFO*
Todd Wilson - *CEO*

OUR COMMUNITIES

Eagle Crest South
608.791.2700

Eagle Crest North
608.779.1700

Riverside
608.406.3900

The Willows
608.406.3980

Cass Street
608.796.1091

The Heights
608.526.2635

Hearten House I
608.784.4511

Hearten House II
608.784.4522

Hearten House III
608.526.6796

Heights Town Homes
608.791.2709

Connections

This past year has been a busy one at Eagle Crest Communities and we accomplished most of our goals even though we worked through the stress of the pandemic.

One of our major accomplishments was remodeling Hearten House III in Holmen and Hearten House I and II in La Crosse.

The first Hearten House was built in 1990. Hearten House was the first memory care in the United States designed to provide memory care in a non-institutional, homelike setting. The original idea for Hearten House started when Linda O'Connor, a social worker at Bethany Riverside, now Riverside Transitional Care, developed a unique program just for memory care patients. Linda believed it would be even more successful if provided in a homelike setting. The first Hearten House was built in 1990 and it was so successful, it received a major grant for college interns to collect data on the program, which would be published nationally.

The data and information regarding the success of Hearten House was published nationally and served as a national model for memory care. Linda O'Connor and several other staff from Bethany Lutheran Homes were asked to speak at the national memory care convention. Memory care as we now know it, all started at Bethany Lutheran Homes in La Crosse.

I would like to thank everyone for your support. Donations for staff appreciation and our tuition reimbursement program go a long way to help us attract and retain the staff needed to provide care. Donations to Eagle Crest Communities are a great investment in the community.

Thank you for allowing us to serve as an extension of your family when you have a need.

I hope the new year brings good health and happiness for all. Happy 2022!

~ Todd D. Wilson, Chief Executive Officer



From the Family of a Hearten House Resident...

"All of the staff that cared for our mother were wonderful and made the extra effort to give her the best quality of life possible. I know that Jerrika is a huge part of the environment. She leads with a wonderful personality and compassionate work ethic. She was our rock. We all know the last year and a half have been very trying for staff, residents, and families. This is where the Hearten House staff went above and beyond with their compassionate and dignified care. The staff and the care they provided were the reason I could sleep at night knowing she was so well cared for."

~ James Young, son of a Hearten House resident

HOLIDAY FUN!



WHAT ARE THE HEARTEN HOUSES?

Hearten House I & II located in La Crosse
Hearten House III located in Holmen

Eagle Crest Communities was a pioneer in creating an environment specific to the needs of a person with dementia. In 1990, our “Hearten House” model was introduced and quickly gained national attention due to the uniqueness of its design, specially trained staff and therapeutic programs. Eagle Crest continues to be the leading provider of memory care services in Western Wisconsin today.



WHY CHOOSE A HEARTEN HOUSE?

Choosing a Hearten House isn't just choosing a facility, it's choosing a close-knit community of staff and residents. At Hearten House, your loved one will be gifted independence and encouraged to find purpose and peace in their daily life.

***EXTRAORDINARY
COMMUNITIES WHERE
PEOPLE THRIVE.***

WHAT MAKES HEARTEN HOUSES STAND OUT:

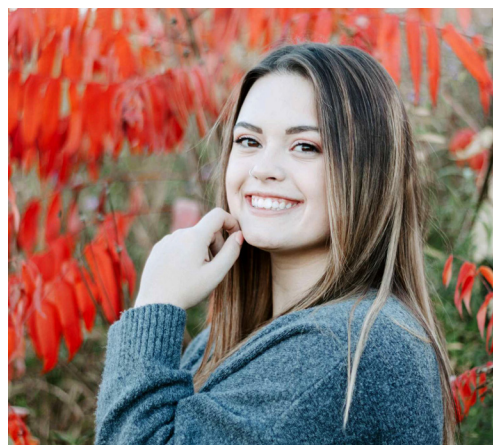
- Specially trained caregivers
- Intimate, home-like community
- Family-style meals
- Daily activities
- Enclosed courtyards to promote fresh air

We're CN'A Job for You!

Have you always wanted a career in healthcare? But didn't know where to start? At Riverside Transitional Care, we are now hiring passionate caregivers! Don't have a CNA license? No problem! We will train you!

Under the Emergency Nurse Aides act, skilled nursing communities are now able to hire "non-certified" nursing assistants. However, we at Eagle Crest Communities wanted to take it one step further. If you come work with us at Riverside Transitional Care, we will pay for your CNA class, books, exams, supplies and time spent in class!

We truly believe in further education for our staff, and are very excited to begin this new program. Interested in signing up or learning more? Please contact Hannah Wieser, recruitment specialist, at 608.791.2733 or hwieser@eaglecrestlife.org



Abby Frommelt
From CNA to Memory Care
Program Coordinator



Work-Life Balance



Education
Scholarships



Advancement
Opportunities



From Left to Right:

Luke Oelke, RN; Taylor Hoesley, Nurse Intern;
Emily Vike, CBRF Program Director;
Ashley Graw, RN Memory Care Nurse Manager

Employee Spotlight

Emily Vike

Emily has been with Eagle Crest Communities for 9 years. She has advanced from Resident Care Assistant to Memory Care Program Coordinator to CBRF Program Director!

1. What is it about ECC that made you want to continue to grow your career here?
 - a. The people. Everyone is very supportive here and we have a great team. It was an easy decision to want to continue my career at ECC because you really feel valued.
2. What is your favorite part about your job?
 - a. My favorite part of my job is seeing RCAs grow into their roles and really forming relationships with the residents. They become family.

From the Family...

"I have highly spoken of the care and love that are shown to my mother. I don't know how our family would have coped if Hearten House had not been there for her. Thank you, thank you for your continued commitment to the betterment of the elderly in their final years. You have given them their dignity and we can't tell you enough how much we appreciate it."

~ Judy Sasse, daughter of Hearten House resident

Donations & Support



Capital Fund



Legacy Fund



Employee Recognition Fund



Tuition Incentive Program

Capital Fund

First Baptist Church
Mindoro Lutheran ELCA

Legacy Fund

Arcadia Community Chest, Inc.

In Memory of Marilyn Dunham
Karen Lyga

In Memory of Frances Heise
Frances Heise Family
Heise Living Trust

On Behalf of Marian & James Larson
Barbara Larson

In Memory of Rosella Lipke
Charles Rodning

In Memory of Jean Scarseth
Richard Boudreau

In Memory of Gary Veldey
Mary Veldey

Employee Appreciation Fund

Heidi Albers
Family of Jackie Bruha
Family of Joyce Clason
Family of Mark Cleghorn
Gerald Duffrin
Shirley Gallagher
Family of Dot Freisinger
Family of Helga Hanson
Esther Harman
Jay Just
Richard & Kathleen Kistner
Amy & Bill Klaus
Michelle & Chris McElligott
Gordon Metz and Family
Family of Duke Micheli
Family of Sharon Opitz
Carlene Sanborn
Jim & Barbara Schlax
Family of Edna Spohn

Pam Starcher
Edward Tanke
William & Louise Temte
Family of Pat Wurster
In Memory of Rosella Lipke
Charles Rodning
In Memory of Beth Lamprich
Greg Lamprich
In Memory of Sharon Opitz
Amy Mische
In Honor of Sharon Radcliffe
Tricia Finch
In Honor of Marjorie Shannon
Kristie & Robert Olah
In Memory of "Kappy" Tausche
Karolyn Collins
In Honor of Libia Reynolds
Brian Reynolds

Tuition Incentive Program

Gerald & Trudy Duffrin
DuWayne & Janet Gebken
Esther Harman
Richard & Kathleen Kistner

Michael & Rose Porter
Barbara Quillin
Kathryn Reinhart

Employee Giving Club

Donna Brogan
Andrea Byrne
Steven Cook
Cindy Craig
Hannah Fort
Todd Garves
Cathleen Grinde
Keri Krueger
Elizabeth Kvistad
Haley Martin
Lori Mikshowsky
Carin Myhre
Shelly Olson
Patrick Senzig
Debra Stanhope
James Stenulson
Vickie Stevens
Todd Wilson

PayPal now available.
Please visit us at:
www.eaglecrestlife.org

Eagle Crest Communities Donation Form

Helping Eagle Crest Communities continue to provide quality, compassionate care in the Coulee Region. Donations are gratefully received and tax deductible to the extent allowed by law.

Name _____

Address _____

- ☐ This gift is in honor of _____
- ☐ This gift is in memory of _____
- ☐ Capital Fund - supports major projects such as Eagle Crest developments.
- ☐ Legacy Fund - supports activities and special events, and enhances amenities & technology for residents.
- ☐ Tuition Incentive Program Fund - supports our recruitment and retention program.
- ☐ Employee Appreciation Fund - promotes employee appreciation.

Special requests are always welcome!

Payable to:
Eagle Crest Communities

Mail to:
Eagle Crest Communities
PO Box 2468
La Crosse, WI 54602-2468





EAGLE CREST COMMUNITIES

Caring Since 1946

2575 South 7th Street
La Crosse, WI 54601

Bethany Lutheran Homes, Inc.

TRADITIONAL ASSISTED LIVING VS. HIGH ACUITY ASSISTED LIVING *WHEN IS HIGH ACUITY ASSISTED LIVING RIGHT FOR ME?*



Traditional Assisted Living blends independent living with opportunities for socialization and supportive services. Daily responsibilities like cooking, cleaning, and transportation to medical appointments are taken care of, allowing a person more time to connect with friends and neighbors. Being independent in mobility within our private, traditional assisted living apartments is our expectation. High Acuity Assisted Living, exclusively available at Eagle Crest South in La Crosse, is uniquely designed to accommodate those whose needs are greater, including the need for a helping hand from our caregivers or the use of a mechanical lift when transferring out of bed, walking or using the restroom.

CALL US TODAY AT 608.791.2702 TO SCHEDULE A PERSONALIZED TOUR!