



EAGLE CREST COMMUNITIES

Caring Since 1946

AUTUMN EDITION 2021



IN THIS ISSUE

PAGE 2

A Special Message from
Todd Wilson, CEO

PAGE 2

Welcome Pastor Linda

PAGE 4-5

Eagle Crest South

OUR MISSION

Rooted in Christian Faith
Caring for Each Other
Serving the Community

OUR CORE VALUES

Teamwork
Respect
Integrity
Commitment
Love

BOARD OF DIRECTORS

Lu Cagin - *Chair*
Joe Zoellner- *Vice Chair*
Pete Hansen - *Treasurer*
Dyanne Brudos - *Secretary*
Kenna Christians - *Director*
Mike Flanagan - *Director*
Sara Havens GHS - *Director*
Leah Mudler - *Director*
John Robinson - *Director*
Todd Garves - *CFO*
Todd Wilson - *CEO*

OUR COMMUNITIES

Eagle Crest South
608.791.2700

Eagle Crest North
608.779.1700

Riverside
608.406.3900

The Willows
608.406.3980

Cass Street
608.796.1091

The Heights
608.526.2635

Hearten House I
608.784.4511

Hearten House II
608.784.4522

Hearten House III
608.526.6796

Heights Town Homes
608.791.2709

Connections

Improving the quality of life for our residents is a top priority at Eagle Crest Communities. Even with the challenges surrounding the Covid-19 pandemic we continue to update our facilities and look for ways to improve the quality of life for those we serve.

During this past year, we did major remodeling at Hearten House III in Holmen, and we are just finishing up remodeling at Hearten House I and II in La Crosse.

On the agenda for 2022 will be a major remodeling at Cass Street Assisted Living along with improvements to the parking lot. We also have plans to move forward with an expansion at Riverside Transitional Care to add more private rooms and update existing rooms. 2022 will be another very busy year.

As we enter the holiday season, I ask that you consider a donation to Bethany Lutheran Homes/Eagle Crest Communities. As a non-profit organization, donations are essential to help with facility improvements and new projects. A donation to Bethany Lutheran Homes/Eagle Crest Communities is a great investment in the community.

Have a wonderful Holiday Season,

~ Todd D. Wilson, *Chief Executive Officer*



A Sneak Peak



At Our Hearten House Remodels!

Welcome Pastor Linda

Greetings! I am your new Chaplain/Campus Pastor, and what a gift I have been given!

I was most recently serving a congregation and long term healthcare facility in Houston, Minnesota. I am very excited and grateful to be serving Eagle Crest Communities. I am led by Matthew 5:14-16 (MSG), "You're here to be light, bringing out the God-colors in the world. God is not a secret to be kept." As a born and raised city girl, my husband and I purchased a farm four years ago to experience country rural living. Caring for dogs, cats, rabbit, mini donkeys, chickens, goats, cows and 70 acres of God's creation, I am easily distracted by farm life.

As a Chaplain, I will attend to the sacred stories of those confronting change in their lives. God is the source of all wholeness and comes near in the delightful, grateful, broken and despairing parts of life, even seeking them out. My intention is to help people move to a different phase of life with their faith and spiritual practices intact.

Clearly, in long-term care, there is the advantage of more time to spend with residents. This ultimately allows for deeper, more personal pastoral relationships between the chaplain, staff, resident and family members. There are many spiritual and emotional issues for those experiencing, serving and living in long-term care. The good news, though, is that the chaplain can journey with those involved as they process these emotions and feelings. In this setting, I will have the opportunity to get to know residents well – their interests, hobbies, life work, values and beliefs. I can encourage residents to reflect on their lives and redefine meaning and purpose for their future living in a long-term care community.

My time with residents, families, and staff may include offering prayer, ritual, and/or sacraments; reading Scripture; participating in song; processing (e.g., helping others ask questions and address fears) and/or reframing a personal journey; accompanying a person during end-of-life care; or simply listening to what the resident has to say. When appropriate, I may also provide referrals or reconnect the resident to the faith community of his or her choice.

Perhaps the most important act of healing a chaplain can perform is speaking God's promise that you are known and loved by the God who made you, the one who accompanies your joy and sorrow with the promise of life after death. My hope is that the residents, family and staff will be strengthened by the love of this community.

In Christ's Love,

Pastor Linda McPeak



Please check out our monthly events calendars at **www.eaglecrestlife.org** for the life enrichment activities and weekly devotions at each community.

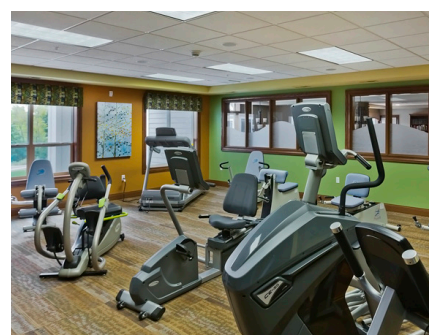
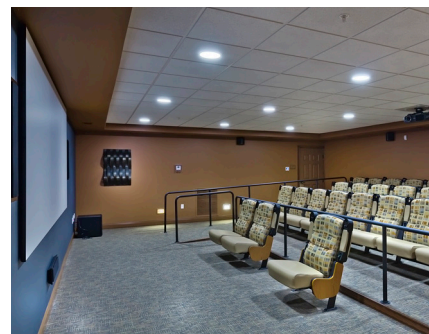
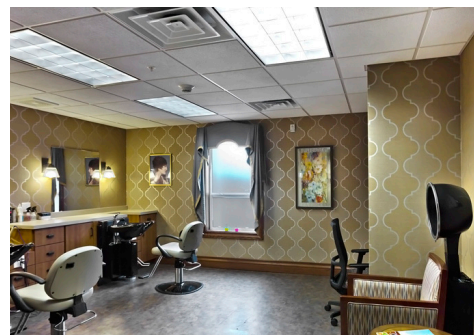
Interested in seeing the fun social activities our residents get to enjoy? Check out our Facebook and Instagram pages **@eaglecrestcommunities** for the latest events and happenings at our communities!

Eagle Crest South - Welcome Home!

TOWN CENTER

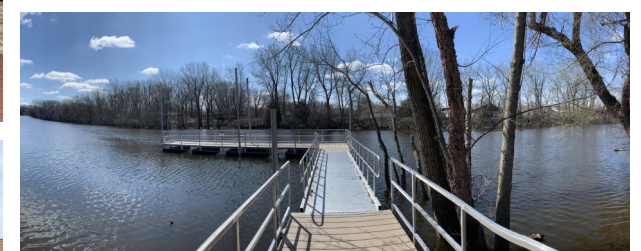
- Market (1st floor)
- Bistro & Restaurant (1st floor)
- Blarney Bar (1st floor)
- Craft Room (1st floor)
- Coulee Bank (1st floor)
- Library (2nd floor)
- Chapel & Auditorium (2nd floor)
- Beauty Salon (2nd floor)
- Fitness Center (2nd floor)
- Movie Theater (2nd floor)
- Massage Room (2nd floor)
- Hobby Shop (Lower level)

Eagle Crest South opened in 2015 and has been very well received by the community. Construction is now complete on a five-story addition making it the largest retirement community in western Wisconsin. Here, seniors live an exceptional lifestyle with a broad array of services and amenities to lead full, rich lives. To promote a strong sense of community where friends come together to exercise, meet for lunch, see a movie or share crafting ideas, Eagle Crest South offers an extraordinary Town Center and Village Square that nurtures the whole person. Whether seeking wellness, life-long learning, spirituality, or fellowship, the Town Center and Village Square are the hubs of the community.



VILLAGE SQUARE

- Market (1st floor)
- Club Lounge Bar (1st floor)
- Art Studio & Community Room (1st floor)
- Art Gallery (1st floor)
- Botanical Garden (1st floor)
- Library (2nd floor)
- Table Game Lounges (2nd-5th floors)
- Eagle's Nest, a 5th floor community room



622 Bennora Lee Court
La Crosse, WI 54601
608.791.2702
marketing@eaglecrestlife.org

Why Choose Eagle Crest Communities?

There is no doubt that this past year and a half has been taxing. On our residents, on our staff and on our community. Our commitment from our staff has been incredible during this time, and Eagle Crest Communities has chosen to properly thank our staff by committing to over \$800,000 in wage increases! We truly feel that our staff deserve the best, and are beyond excited to announce this increase.

Beyond the pay, why choose to work at Eagle Crest Communities? Working at one of our communities is more than just working a 9-5. It's getting to know our residents in an intimate setting. It's finding that work-life balance we are all striving towards. It's advancing into new opportunities you never knew were possible. We have incredible benefits, such as our 401K employer match program, our tuition reimbursement program, and our \$500 employee referral program. But what's more? We have a passionate team ready to help you learn and grow in your career.

Join our team, and apply online at www.eaglecrestlife.org/careers.



Work-Life Balance



Tuition Investment



Advancement Opportunities

We “Rec”ommend Joining Our Team!



Miranda Rushlow: Promoting her internal growth from an intern in Rec Therapy and then returning as Assistant Director of Rec Therapy, then to Director of Rec Therapy and Volunteer Coordinator

After graduating from UW- La Crosse, I started at Riverside in 2017 as a Recreation Therapy Assistant. I then happily came back in the fall of 2020 as the Assistant Director of Recreation Therapy. A few months later, I was promoted to Director of Recreation Therapy and Volunteer Coordinator!

I was so excited to see a position open at Riverside as it was so hard to leave three years ago. I loved everything about working at Riverside, my coworkers, the fantastic recreation department, but most importantly the residents. I was ecstatic for the opportunity to come back home to the La Crosse area to provide recreation therapy services to those within my hometown community.

It is hard to put into words the love I have for my profession and my position at Riverside. My favorite aspect of my job is building strong relationships with all of the residents and their families.

Getting to know residents on a personal level allows me to strive

in my profession as I can personalize and create new programs in which they will not only enjoy, but that also provide opportunities to increase their social, emotional, physical, spiritual, and cognitive well-being. When it comes down to it, putting smiles on the faces of those I work with makes every day worthwhile.

Donations & Support



Capital Fund



Legacy Fund



Employee Recognition Fund



Employee Recognition Fund

Capital Fund

William & Louise Temte

Legacy Fund

The Rita McGaughey Charitable Gift
Fund of Thrivent

Employee Appreciation Fund

Brenda Rooney

In Memory of

"Kappy" Tausche

Allan & Lynda Gorsett

Lisa Izant

Jerrine Kellicut

Ann Konop

Susan Wilhelm

Tuition Incentive Program

In Memory of

"Kappy" Tausche

Jeff & Pam Carter

Natalie Huckle

Jill & Greg Keck

The Family of William Welch Sr.

Steve Manske

Joanne Nordeen

Robert & Patricia McLoone

Kari & Guy Schimenz

Jacquelyn Seymour

Carrie Stempski

Chris & Myron Swenson

Peter Tausche

Michele Weber

Employee Giving Club

Donna Brogan

Haley Martin

Andrea Byrne

Lori Mikshowsky

Steven Cook

Carin Myhre

Cindy Craig

Shelly Olson

Hannah Fort

Patrick Senzig

Todd Garves

Debra Stanhope

Cathleen Grinde

James Stenulson

Keri Krueger

Vickie Stevens

Elizabeth Kvistad

Todd Wilson

*It is our honor to express
our sincere appreciation to
the many wonderful people
who help support Eagle
Crest Communities.*

PayPal now available. Please visit us at:
www.eaglecrestlife.org

Eagle Crest Communities Donation Form

Helping Eagle Crest Communities continue to provide quality, compassionate care in the Coulee Region.
Donations are gratefully received and tax deductible to the extent allowed by law.

Name _____

Address _____

- ☐ This gift is in honor of _____
- ☐ This gift is in memory of _____
- ☐ Capital Fund - supports major projects such as Eagle Crest developments.
- ☐ Legacy Fund - supports activities and special events, and enhances amenities & technology for residents.
- ☐ Tuition Incentive Program Fund - supports our recruitment and retention program.
- ☐ Employee Appreciation Fund - promotes employee appreciation.

Special requests are always welcome!

Payable to:

Eagle Crest Communities

Mail to:

Eagle Crest Communities
PO Box 2468
La Crosse, WI 54602-2468





EAGLE CREST COMMUNITIES

Caring Since 1946

2575 South 7th Street
La Crosse, WI 54601

Bethany Lutheran Homes, Inc.



EAGLE CREST COMMUNITIES™

Caring Since 1946

OPEN INTERVIEWS!

Monday-Friday

Noon - 4pm

622 Bennora Lee Court,
La Crosse

