



# EAGLE CREST SOUTH - LA CROSSE

Independent Living Plus

**BETHANY**  
**LUTHERAN HOMES**  
A GUNDERSEN HEALTH SYSTEM AFFILIATE

*Great People, Great Care!*

With fabulous amenities and maintenance-free living, every day is yours at Eagle Crest South. Thoughtfully crafted floor plans gives way to incredible views with generous space to celebrate your own sense of style.

## DISTINGUISHING DETAIL

- Bright open floor plans emphasize spacious rooms with nine-foot ceilings
- Refrigerator, stove/oven, dishwasher, microwave, and garbage disposal
- Convenient in-home laundry with washer and dryer
- Blinds on all windows and patio doors
- Cherry cabinetry
- Individually controlled heat and central air conditioning
- Walk-in closet
- Patio or balcony on all apartments
- Select floor plans offer a den, sunroom, electric fireplace and breakfast bar

At Eagle Crest South, discover convenient amenities and a distinct level of service that surpasses expectations.

## INCLUDED AMENITIES

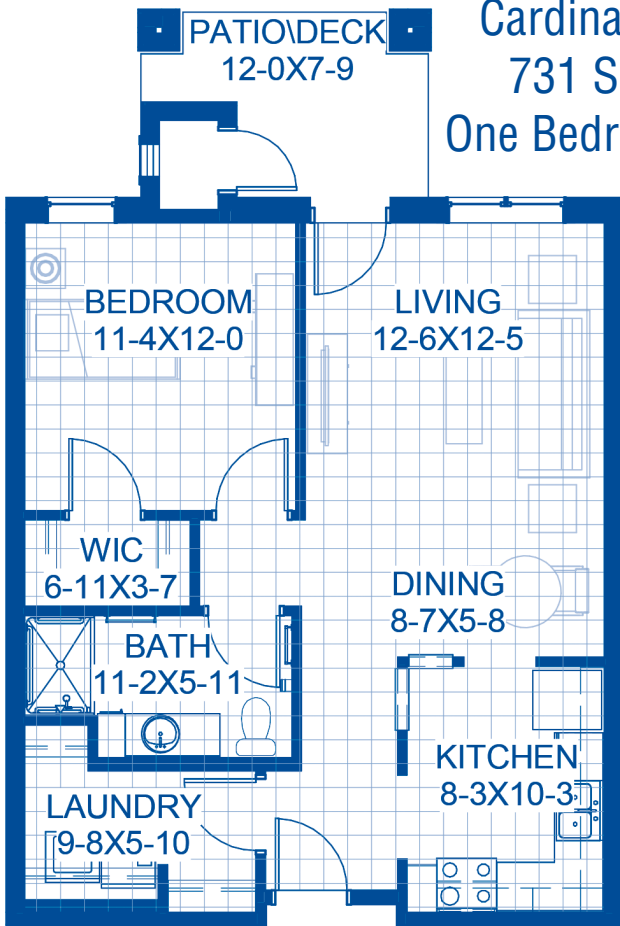
- All utilities (heat, electric, central air conditioning)
- Apartment and building maintenance
- Building insurance and city service fees
- Controlled access
- Emergency call system
- Expanded basic cable television
- Indoor heated car wash bay
- Lawn care and snow removal
- Local phone
- Monitored smoke detector/carbon monoxide detectors
- Month-to-month residency agreement
- Pet free community
- Priority access to other Bethany Lutheran Homes housing and care options based on availability
- Professional management by Bethany Lutheran Homes, Inc.
- Smoke free community
- Social programs and events
- Spiritual care program
- Weekly health and wellness program
- Wireless internet

## OTHER CONVENIENCES *(additional fees apply)*

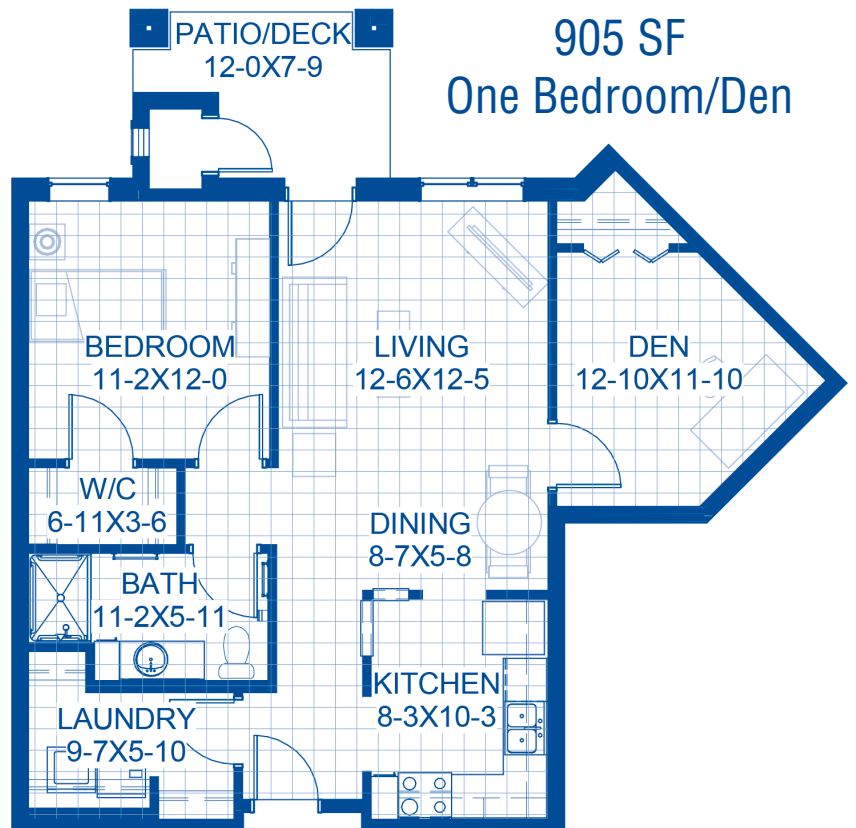
- Companion Services
- Foot Care
- Guest Meals
- Guest Suites - \$70 per night
- Handyman
- Hospitality services
- Housekeeping
- Massage Therapy
- Private storage unit - \$20
- Restaurant-style dining
- Underground heated parking - \$50



**Cardinal 1**  
731 SF  
One Bedroom

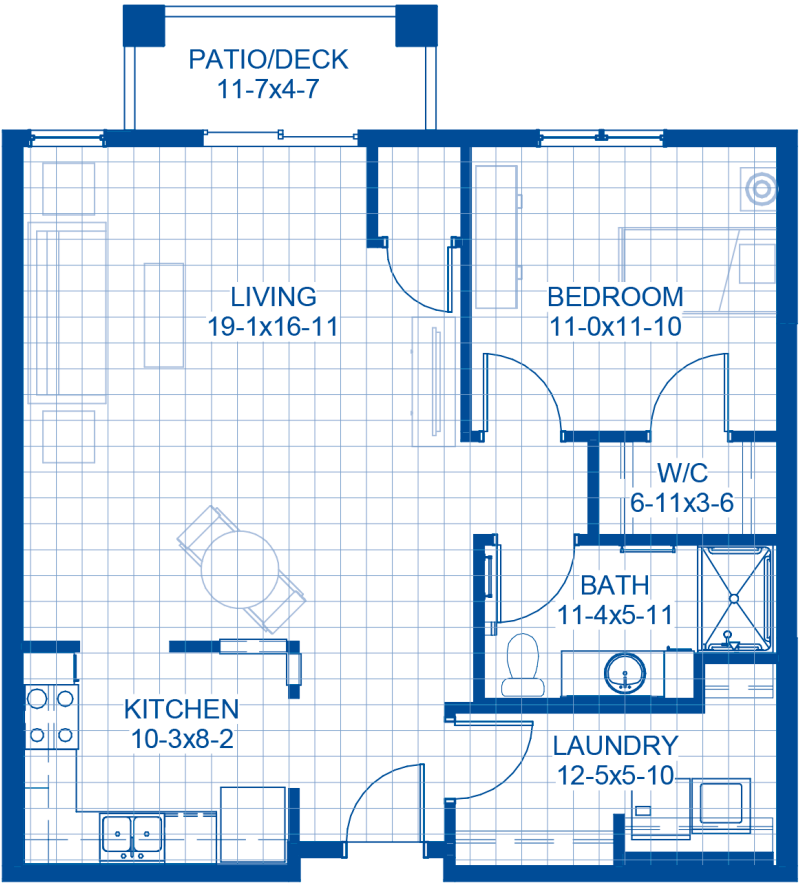


**Cardinal 2**  
905 SF  
One Bedroom/Den

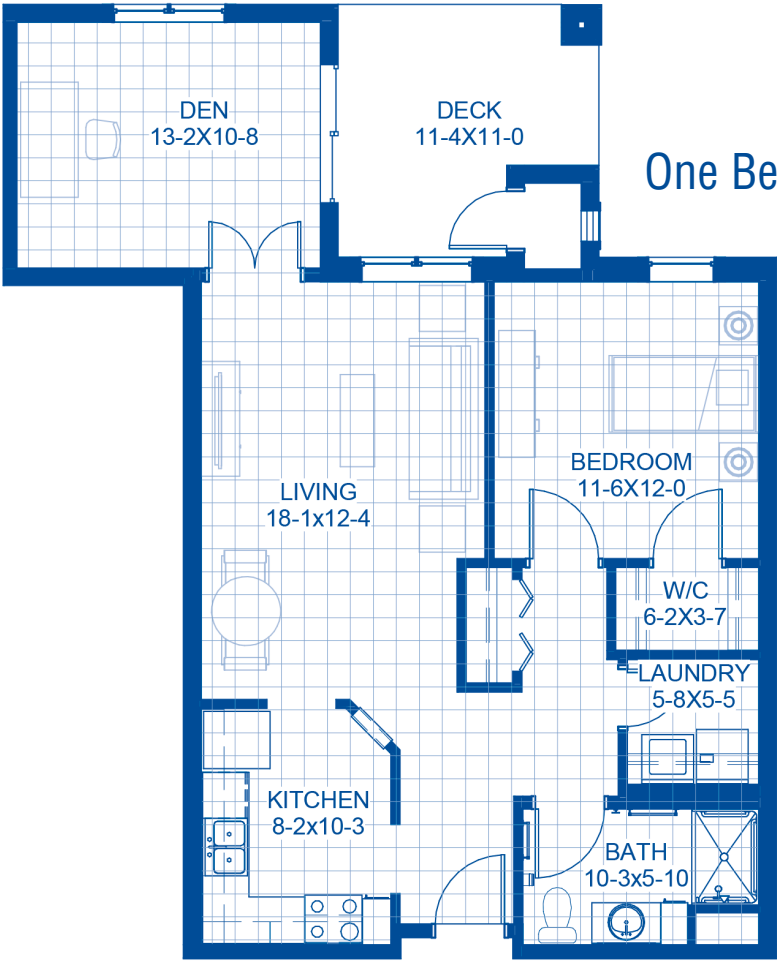


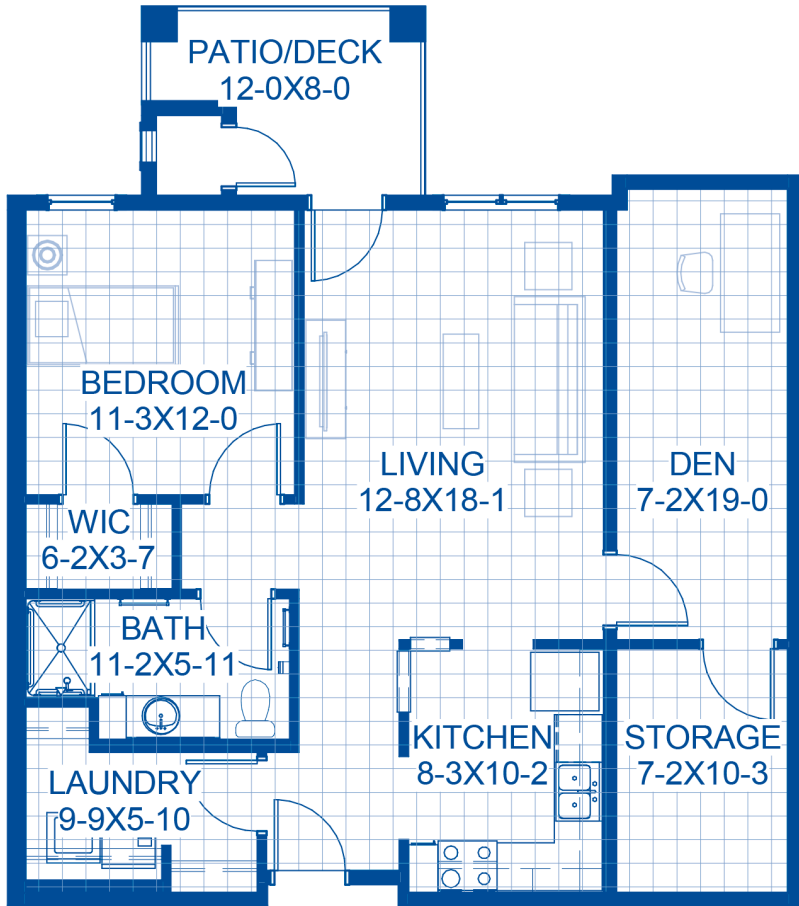
Floor plans, features and amenities are subject to change without notice.  
Stated dimensions and square footage are approximate. Please ask about availability.

Wren  
979 SF  
One Bedroom



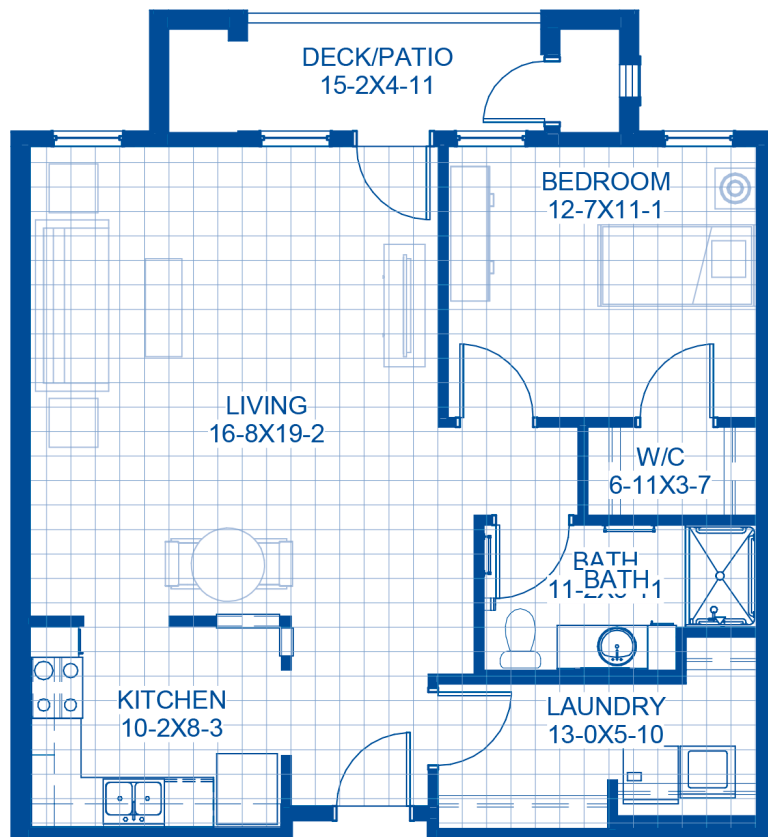
Dove  
980 SF  
One Bedroom/Sunroom

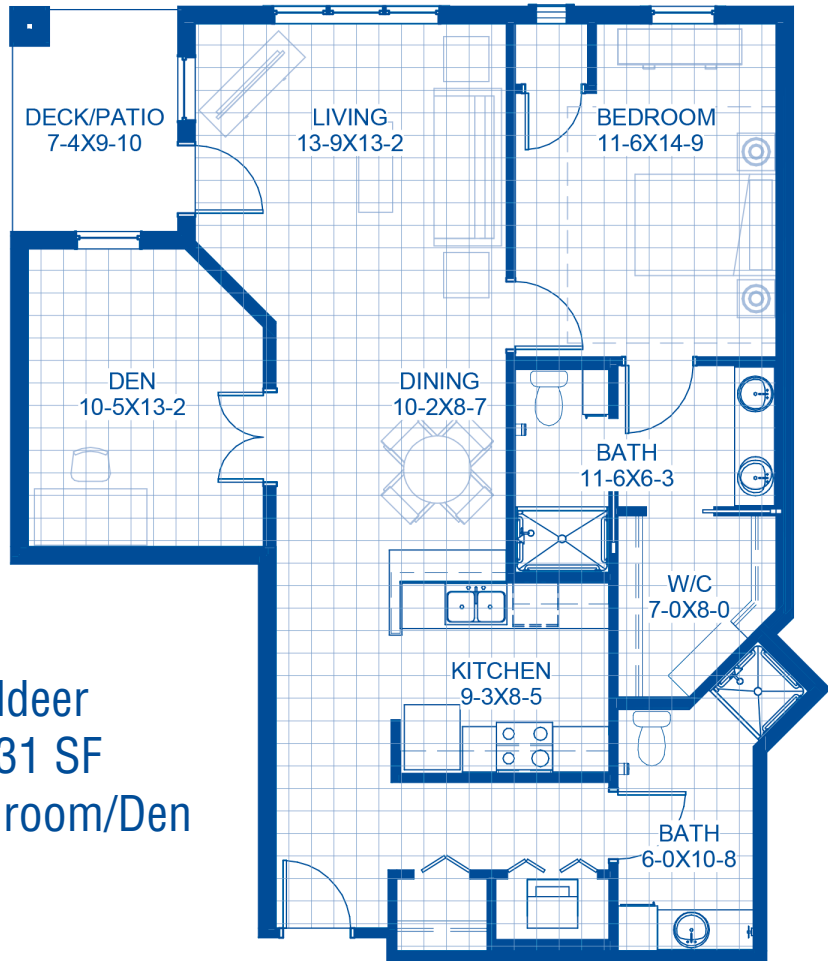
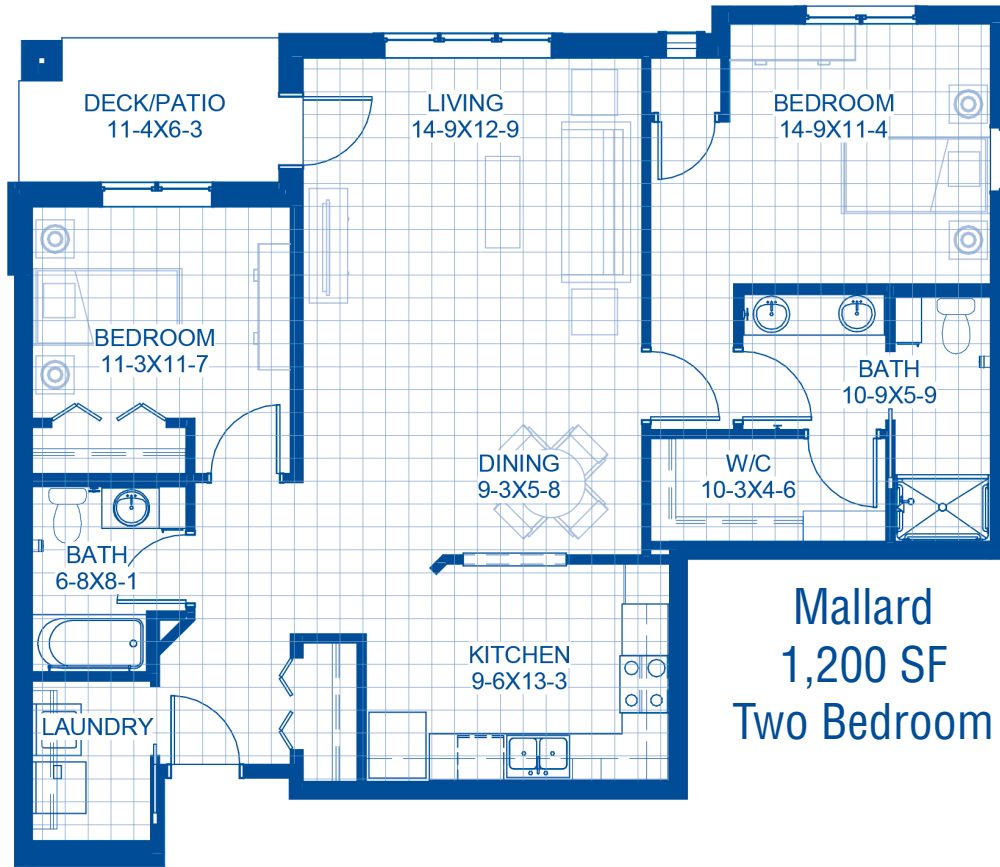




Dove Plus  
1007 SF  
One Bedroom/Den

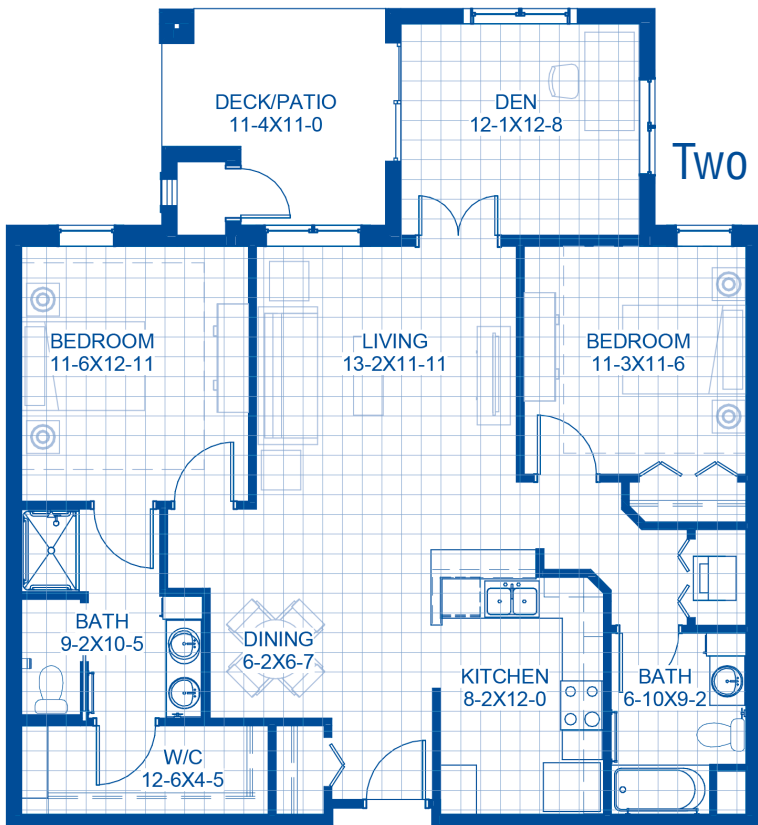
Blue Jay  
1,119 SF  
One Bedroom



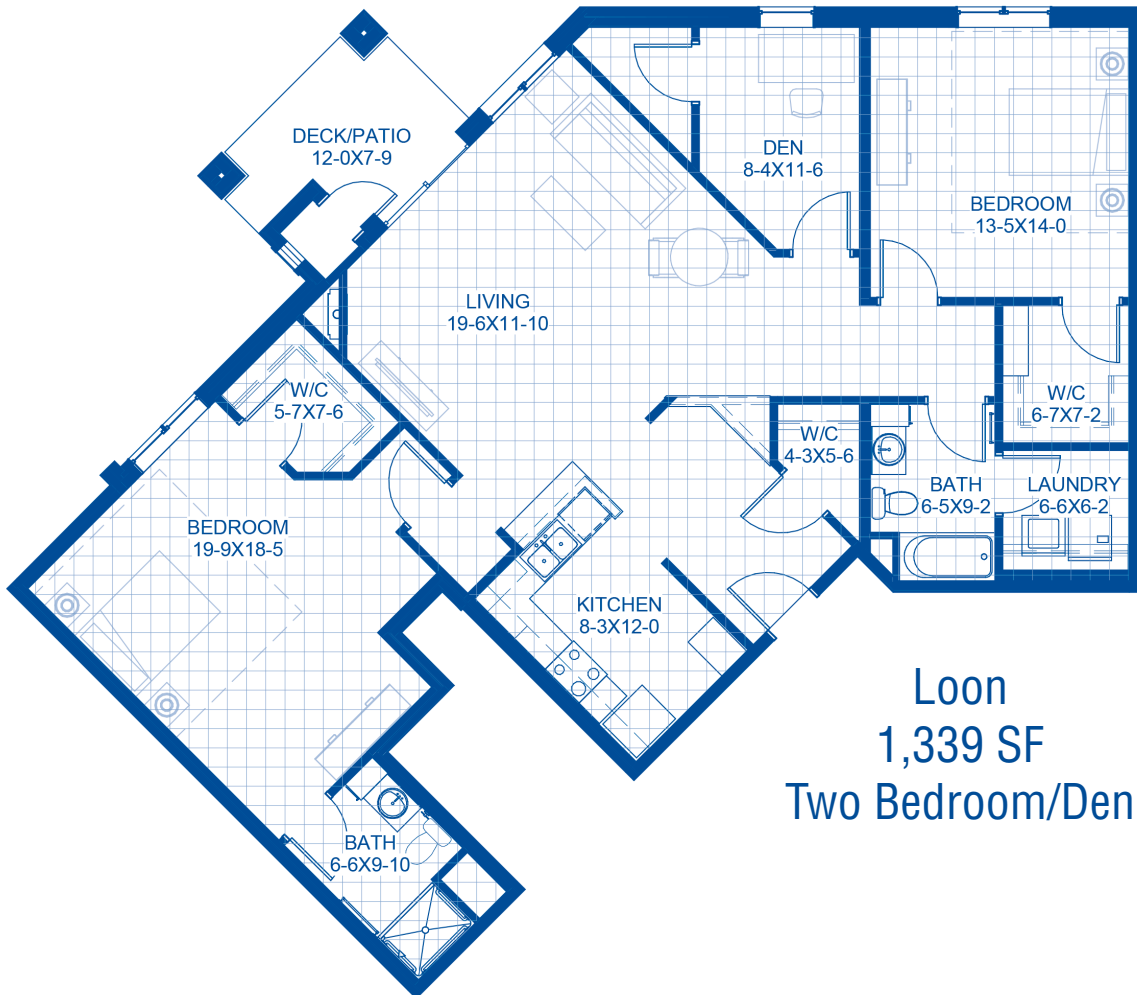




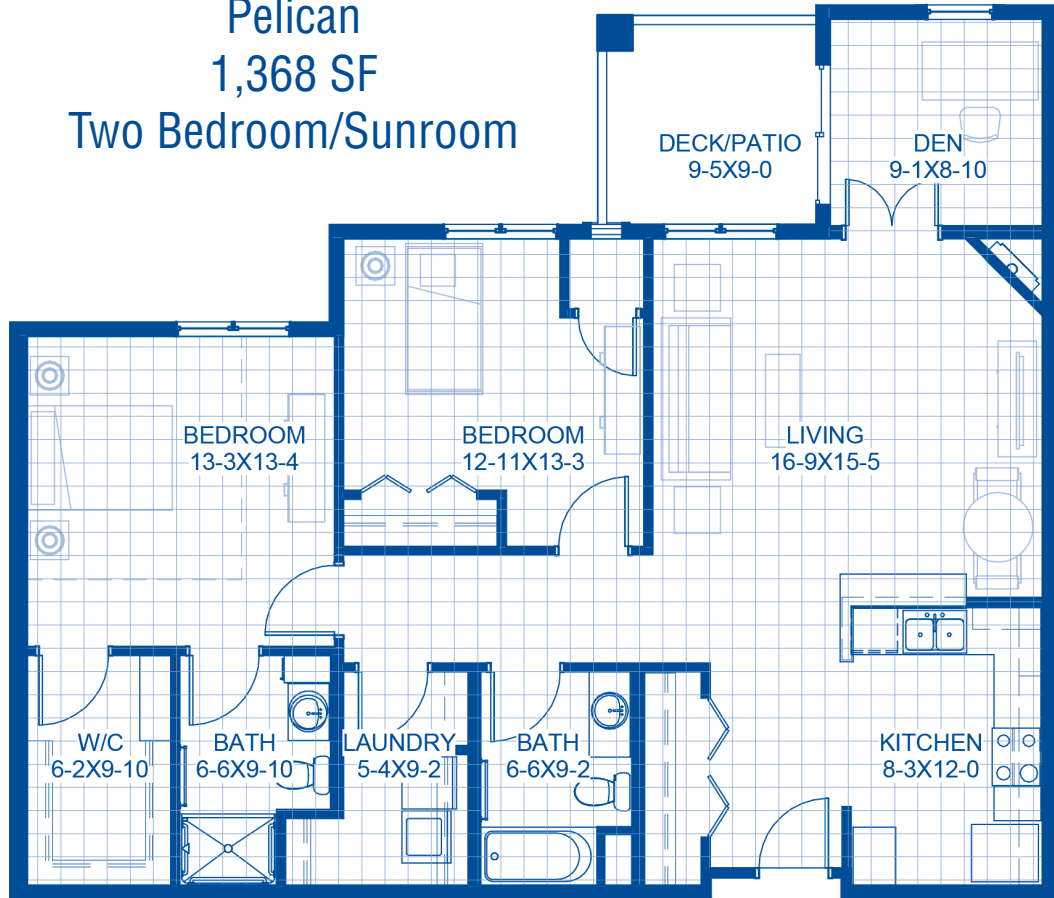
**Nuthatch**  
1,293 SF  
Two Bedroom/Sunroom



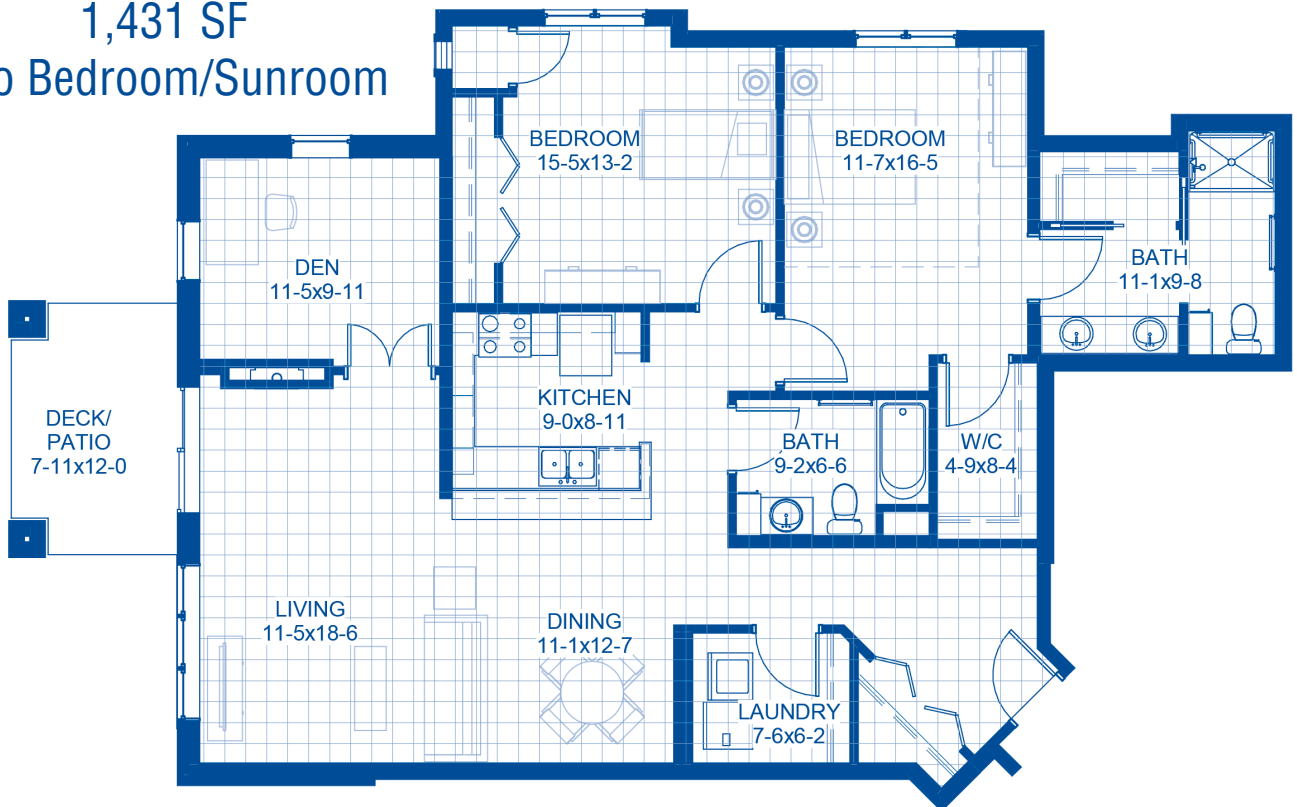
**Loon**  
1,339 SF  
Two Bedroom/Den



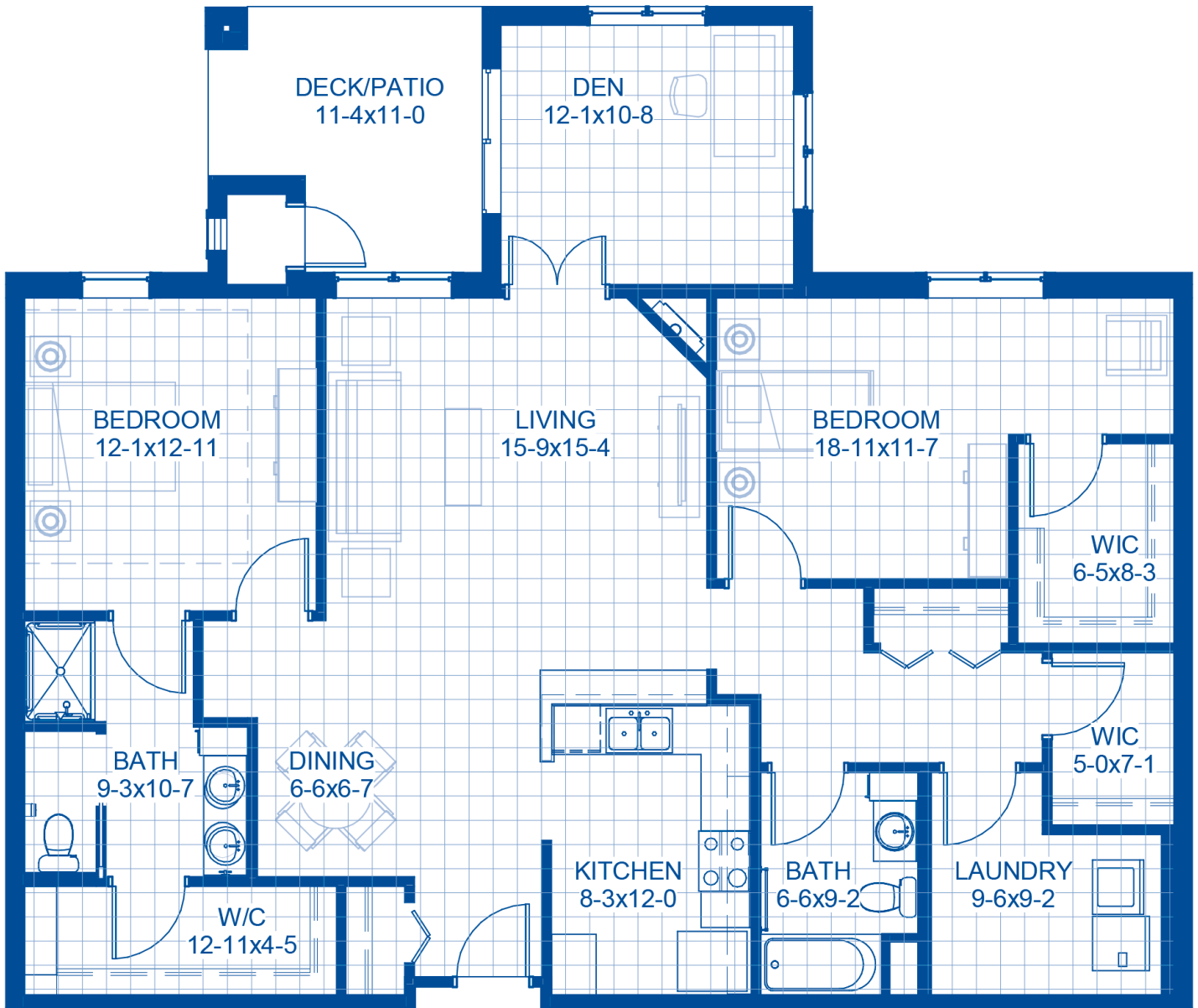
Pelican  
1,368 SF  
Two Bedroom/Sunroom



Oriole  
1,431 SF  
Two Bedroom/Sunroom







Swan  
1653 SF  
Two Bedroom/Sunroom

# Eagle Crest South

## Private Pay Apartment Rates

### Effective January 1, 2018

#### Independent Living

		Size
Cardinal 1	731 Sq. Ft.	1 Bedroom
Cardinal 2	905 Sq. Ft.	1 Bedroom/Den
Wren	979 Sq. Ft.	1 Bedroom
Dove	980 Sq. Ft.	1 Bedroom/Sunroom
Dove Plus	1007 Sq. Ft.	1 Bedroom/Den
Blue Jay	1119 Sq. Ft.	1 Bedroom
Mallard	1200 Sq. Ft.	2 Bedroom
Killdeer	1231 Sq. Ft.	1 Bedroom/Den
Nuthatch	1293 Sq. Ft.	2 Bedroom/Sunroom
Loon	1339 Sq. Ft.	2 Bedroom/Den
Pelican	1368 Sq. Ft.	2 Bedroom/Sunroom
Oriole	1431 Sq. Ft.	2 Bedroom/Sunroom
Swan	1653 Sq. Ft.	2 Bedroom/Sunroom
2nd Occupant Fee	*****	*****

\*\* Double occupancy available in one-bedroom apartments only.

Rates for a 2nd occupant in High Acuity Assisted Living or Memory Care are \$850/month when no nursing services are provided, which covers the cost of three meals daily, and housekeeping/laundry support weekly. If nursing services are provided, the monthly rate for a 2nd occupant would increase to \$3,000 per month + points of care fees as needed.



## *Bethany Lutheran Homes, Inc.*

*Mission Statement  
Rooted in Christian Faith  
Caring for Each other  
Serving the Community*

### *Our Core Values in Action*

*Teamwork · Respect · Integrity · Commitment · Love*

## **Great People, Great Care!**

Bethany Lutheran Homes of La Crosse, Wisconsin was conceived in the hearts and minds of men and women who said, “We need a home for the aging to live in peace and dignity, where a Christian philosophy will be the guide.” Bethany Lutheran Homes began as a dream in 1946.

### **HOUSING CHOICES**

- Independent Living Plus
- High Acuity Assisted Living
- Memory Care Residence
- Serenity Suites

# BETHANY

## LUTHERAN HOMES

A GUNDERSEN HEALTH SYSTEM AFFILIATE

At Eagle Crest South, the comforts of home extend beyond your personal residence to include a superior level of everyday convenience.

### COMMUNITY ATTRACTIONS

- Auditorium
- Bank
- Beauty/Barber salon
- Bistro
- Blarney Bar
- Chapel
- Cinema
- Courtyard with walking paths
- Hobby Shop
- Library with computer work stations
- Located across from Gundersen Health System
- Market
- Massage room
- Restaurant-style dining room
- Wellness center
- Within minutes of shopping, restaurants, recreational and health services

Eagle Crest South  
608-791-2700  
622 Bennora Lee Court  
La Crosse, WI 54601

Corporate Office  
2575 South 7th Street  
La Crosse, WI 54601  
(608) 406-3900 *phone*  
(608) 406-3883 *fax*

We invite you to tour our website.  
I think you will agree that Bethany  
Lutheran Homes is a premier provider of  
Long Term Care Services to the community.  
visit [www.bethanylutheranhomes.org](http://www.bethanylutheranhomes.org)

